

FACTORY CAT

MADE IN U.S.A.

GTX Rider



FAMILY OF INDUSTRIAL CLEANING EQUIPMENT (17" - 48")



54" LONG

FACTORY CAT GTX SCRUBBERS

These tough, compact scrubbers offer the productivity of riders with better maneuverability than walk-behinds.

With two specialized cleaning systems to choose from, **FACTORY CATS** offer the performance and capacity required to clean your unique application.

The "Disk" machines offer gimbaled brush drive and 50% more scrubbing power than competitive brands. The "Cylindricals" scrub and sweep in a single pass.

The scrub deck has curtains and wipers, for unmatched water control. The side shrouds are made of thick steel and remove easily for brush access and adjustments.

PRODUCTIVITY

Productivity is a function of scrub width, run time and tank capacity, and **FACTORY CATS** top the chart.

- 1. Larger tanks = Less stopping to refill
- 2. Wider scrub path = Fewer trips down the aisle
- 3. High scrub pressure = Less double scrubbing
- 4. More vacuum = Dry, safe, clean floors
- 5. Big battery pack = Runs a full shift (7hours!)

EASY TO SERVICE

Every manufacturer claims to have equipment that is tough and easy to clean up. **FACTORY CAT GTXs** have "Tip Back Tanks" for unrestricted access.

Tank Tips



We invite you to compare other equipment. Your maintenance staff will notice the difference.

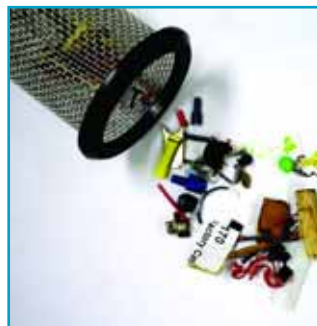
FREE DEMO (800) 634-4060



GTX RIDE
U-TURNS IN 5

OVERSIZED LID
PERMITS CLEANING

DRAIN SAVER
KEEPS DEBRIS OUT
OF DRAINS



BUMPER
SQUEEGEE PROTECTION

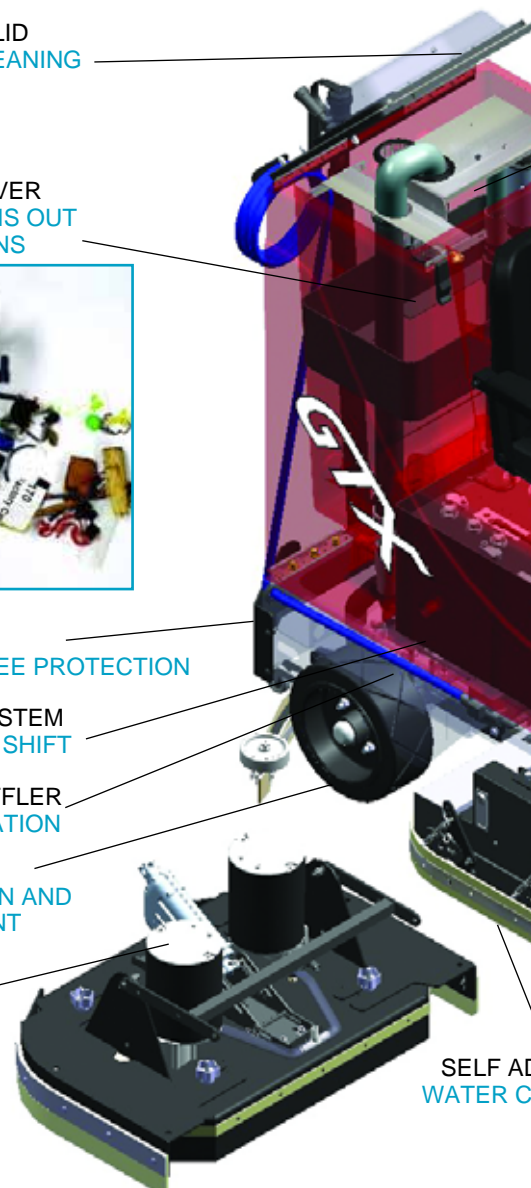
36 VOLT SYSTEM
RUNS FULL SHIFT

VACUUM MUFFLER
QUIET OPERATION

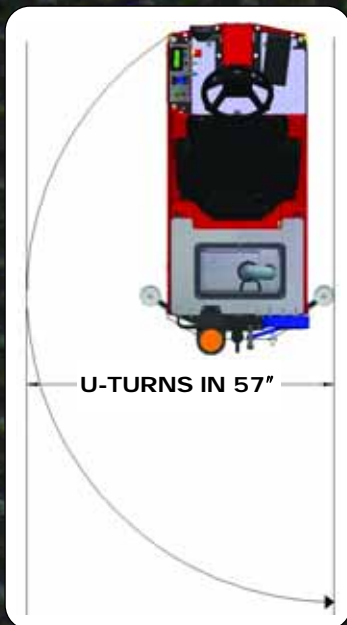
WIDE TIRES (5")
GOOD TRACTION AND
SOFT FOOTPRINT

DISK DECK
OVERSIZED
MOTORS

SELF AD
WATER C



HAN WALK BEHINDS

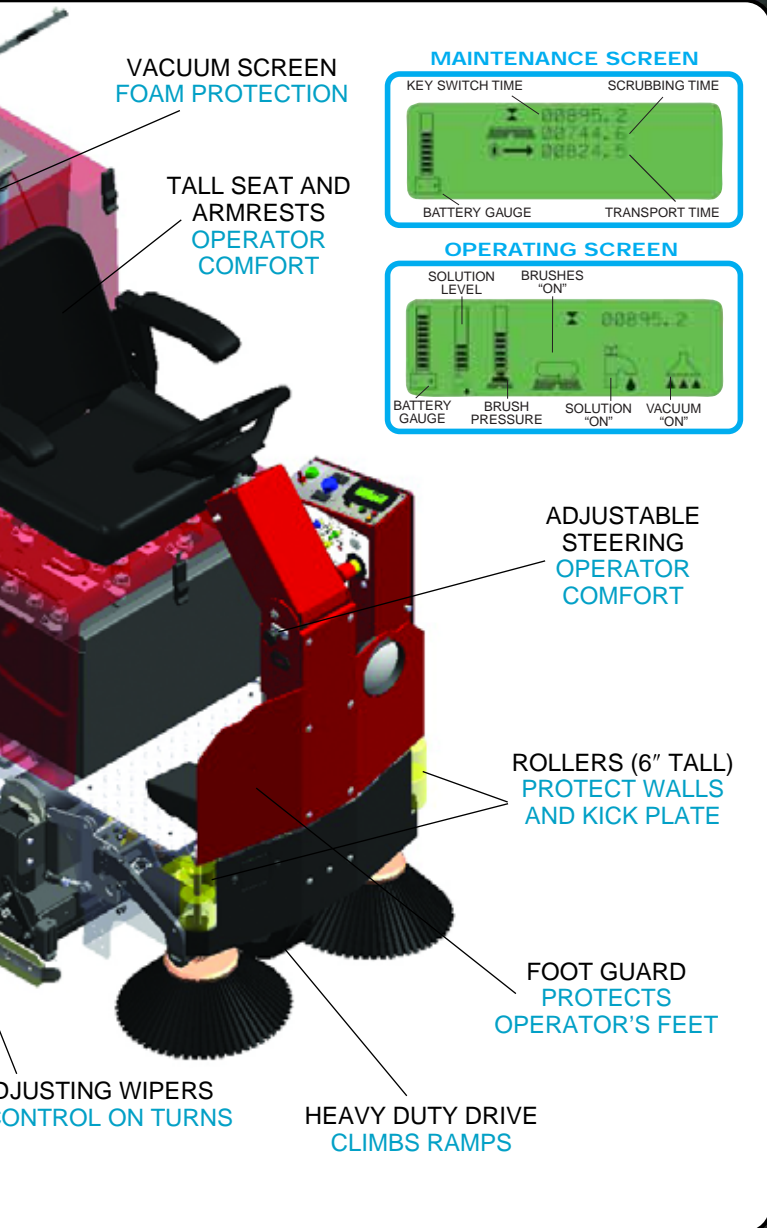


OPERATOR EASE

The operator sits in a spring-suspended, fully adjustable, mid-back chair. The adjustable steering column, headlight, and armrests further enhance operator comfort.

The **FACTORY CATS** have a powerful drive motor, can climb steep ramps, and come standard with heavy duty tires. Features include an automatic parking brake, and reduction of transport speed while scrubbing or reversing.

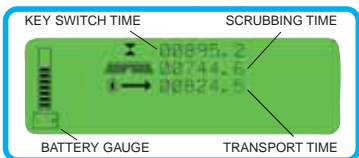
Our *Central Command II* system includes a LCD readout, on-board diagnostics, and three hour meters, simplifying preventive maintenance intervals. If the batteries become too discharged, the **FACTORY CATS** automatically shut down all systems except "transport", to allow the machine to return to the charge station.



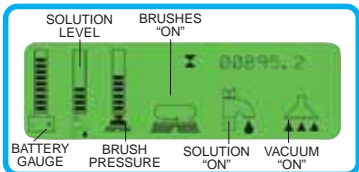
VACUUM SCREEN
FOAM PROTECTION

TALL SEAT AND
ARMRESTS
OPERATOR
COMFORT

MAINTENANCE SCREEN



OPERATING SCREEN



ADJUSTABLE
STEERING
OPERATOR
COMFORT

ROLLERS (6" TALL)
PROTECT WALLS
AND KICK PLATE

FOOT GUARD
PROTECTS
OPERATOR'S FEET

ADJUSTING WIPERS
CONTROL ON TURNS

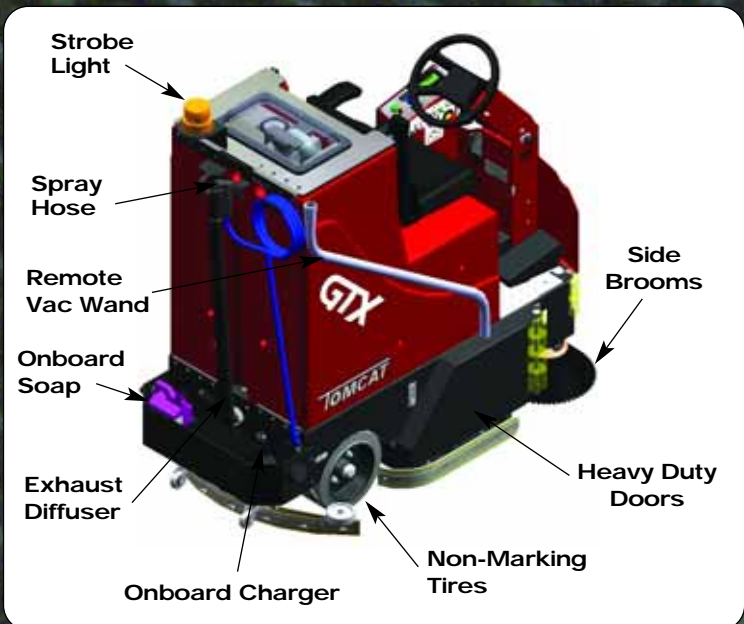
HEAVY DUTY DRIVE
CLIMBS RAMP

BUILT TOUGH

FACTORY CATS use powerful motors, so they typically run at only 75% of their capacity. This leaves power in reserve for times where heavy scrubbing is required, and prolongs motor life.

- **FACTORY CATS** are constructed of thick steel, and powder painted to prevent corrosion.
- The tanks have extra-thick walls, brass inserts, and "through tubes" for strength.
- Tall polyurethane rollers disperse collisions without leaving marks on your walls.
- **FACTORY CATS** use only stainless fasteners.

POPULAR OPTIONS



Strobe Light

Spray Hose

Remote Vac Wand

Onboard Soap

Exhaust Diffuser

Onboard Charger

Side Brooms

Heavy Duty Doors

Non-Marking Tires

RETURN ON INVESTMENT

AREA	TIME REQUIRED TO CLEAN		
	Sq. Ft.	By Hand	Model GTX 30" Weekly Savings
10,000	7 hrs	0.5 hrs	\$ 252.00
25,000	17 hrs	1.0 hrs	\$ 636.00
75,000	50 hrs	2.5 hrs	\$1,900.00
100,000	70 hrs	3.5 hrs	\$2,544.00

EXPERIENCED DISTRIBUTORS

FACTORY CAT continues to grow by providing the toughest machines in our industry. Our 330 distributors each maintain a factory-trained service department and diverse rental fleet, which allow them to continue serving your needs.

We offer a line of cleaning equipment that includes sweepers and scrubbers in both walk-behind and rider models. All **FACTORY CAT** machines are practical, rugged and priced sensibly.

GUARANTEED SERVICE

We guarantee to supply you the spare parts you need within three workdays, or they are yours free. This applies only to the 48 contiguous states, at the customer's special request, and to parts that can be shipped by courier.

AUTHORIZED DISTRIBUTOR

Manufactured By:
R.P.S. Corporation
P.O. Box 368 • Racine, WI 53401
Phone: (800) 634-4060
Fax: (866) 901-3335
www.factorycat.com

Copyright R.P.S. Corporation 2007. All rights reserved. Since our policy is one of constant improvement, all specifications are subject to change without notice.

Body Construction/Dimensions

Tank Material:	Poly (3/8")
Chassis Construction:	3/16" Steel
Rear Wheels:	(2) 12" x 5"
Size (L x W x H):	54" x 26" x 55"
Squeegee Size:	32" or 35"
Weight:	780 lbs.
Weight (w/245 ah batteries):	1,222 lbs.

Scrub System

Disk Brush/Pad Diameter:	GTX-26: (2) 13" GTX-30: (2) 15" GTX-34: (2) 17"
Standard Brush Motor (disk):	(2) 0.75 hp / 300 rpm
Optional Brush Motor (disk):	(2) 1.0 hp / 350 rpm
Cylindrical Brush Size:	GTX-24: (2) 22" GTX-27: (2) 25" GTX-30: (2) 28" GTX-34: (2) 32"
Standard Brush Motor (cylindrical):	(2) 0.75 hp / 350 rpm
Cylindrical Brush Speed	750 rpm
Brush Down Pressure:	0-250 lbs.
Actuator Rating:	500 lbs.

Battery System

System Voltage:	36 volts
Standard Battery Rating:	245 AH
Optional Battery Rating:	325 AH
Battery Run Time:	Up to 7 hrs.
Charger (110-v / 60 Hz, auto):	36-v / 25 amp

Solution System

Solution Tank Capacity:	35 gal.
Solution Flow Rate:	0-1.5 gpm
Solution Filter:	Stainless Inline

Recovery System

Recovery Tank Capacity:	35 gal.
Vacuum Power (standard):	1.0 hp or 2.0 hp
Drain Hose:	2.0" Diameter
Vacuum Specs (water-lift / airflow)	68" / 70 cfm
Demisting Chamber:	3 gallons

Drive System

Transaxle Description:	1.0 hp, sealed
Speed Control:	Variable 0-320 ft.
Minimum Aisle U-Turn:	56"
Sound Level:	68 dBA

Productivity

Cleaning Width & Rate/Hour:	24"/26,400 sq. ft./hr. 26"/28,600 sq. ft./hr. 27"/29,700 sq. ft./hr. 30"/33,000 sq. ft./hr. 34"/37,400 sq. ft./hr.
-----------------------------	--

Optional Equipment

- Maintenance Free Batteries
- Spray Hose / Vacuum Wand
- Manager "Lockout"
- Onboard Soap
- Concrete / Marble Polishing
- Onboard Charger
- Grey Tires
- Remote Scrub Wand
- Side Brooms
- HD Package